



SYMBIOSIS INSTITUTE OF TECHNOLOGY, PUNE

Constituent of Symbiosis International (Deemed University), Pune

(Established under Section 3 of the UGC Act of 1956 vide notification number F-9-12/2001-U-3 of the Government of India)
Re-Accredited by NAAC with 'A++' Grade



— INFORMATION BROCHURE —

B.Tech.

- Artificial Intelligence and Machine Learning
- Civil Engineering
- Computer Science and Engineering
- Electronics and Telecommunication Engineering
- Mechanical Engineering
- Robotics and Automation
- Robotics & Artificial Intelligence

M.Tech.

- Artificial Intelligence and Machine Learning
- Automotive Technology in collaboration with ARAI India
- Engineering Design (By Research)
- Robotics & Artificial Intelligence

Ph.D.

- Artificial Intelligence and Machine Learning
- Basic and Applied Sciences
- Civil Engineering
- Computer Science and Engineering
- Electronics and Telecommunication Engineering
- Mechanical Engineering
- Robotics and Automation

About Symbiosis Institute of Technology, Pune

The Symbiosis Advantage

Problem-Based Learning

Holistic Engineering Curriculum

B.Tech. Degree with Interdisciplinary Specializations (Honors and Minors)

Focused Skill Development Activities

Internationalization /Dual degree

Pre-placement preparation

Option to Pursue Diploma in Business Management

Strong Industry Connect

Multicultural and Vibrant Campus Life

Nurturing the Future

► Life at SIT, Pune



► Students Club and Societies

Student Clubs

- Artificial Intelligence
- Quantum Club
- Astra Club
- Developer Students Club
- Electronic Design
- Augmented Reality/Virtual Reality
- Mathelete Club
- Blockchain
- Robotics Process Automation
- Rotonity
- Soul to Sole Dance
- Space & Astronomy Club
- Symbiosis Music Society
- TED club
- Varsity Care
- MOSAIC
- Photography

Student Chapters

- Association for Computing Machinery (ACM)
- American Society of Civil Engineers Student Chapter, SIT Pune
- Society of Automotive Engineers (SAE)
- Wrench Welders Racing (WWR)
- IEEE Robotics and Automation Society
- IEEE Student Chapter
- Indian Society of Heating, Refrigerating and Air Conditioning Engineers (ISHRAE)
- Mechanical Engineering Students Association (MESA)
- Next Generation Communication Club (NGCC) & 5G Use case Lab

International Initiatives

Symbiosis Centre for International Education takes a large number of initiatives for collaboration with foreign universities as follows:

- ▶ **Global Immersion Programme**
 - Semester-abroad program
 - Summer schools
 - Semester exchange program
- ▶ **Scholar in Residence Programme and Joint Research Initiatives**
- ▶ **Dual Degree and Academic Progression (4+1) programmes in collaboration with following renowned International Universities:**
 - ▶ Deakin University, Australia
 - ▶ University of East Anglia, UK
 - ▶ Loughborough University, UK
 - ▶ Northeastern University, US
 - ▶ Aston University, UK
- ▶ **Summer and Winter Internship**
- ▶ **Delivery of Lectures by Eminent Faculty**
- ▶ **International Industry Visits for Students**

Advanced Infrastructure



Computer Vision (IMAC) Lab



Robotics and Automation Lab



GPU Workstation Lab



Bajaj Skills Lab



Infosys Makers Lab



TCIL 5G Lab

Top Placement and Internship Companies

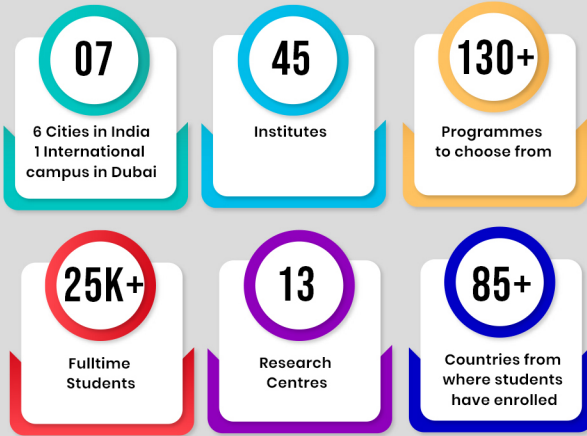
200+ Recruiters | Highest Package: INR 27 LPA |
Highest Internship Stipend: INR 85K/month



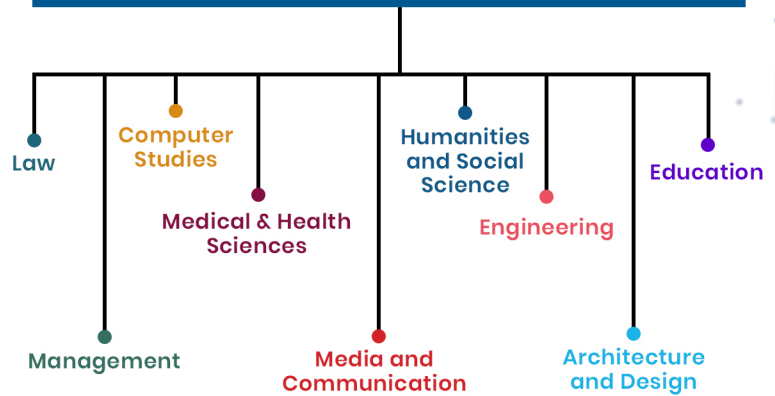
About Symbiosis International (Deemed University)

- ▶ One of India's leading educational Institutions imparting quality education for over 50 years.
- ▶ Established in the year 1971 by Dr. S.B. Mujumdar, Founder & President, Symbiosis and Chancellor, Symbiosis International (Deemed University).

Symbiosis International (Deemed University)



Symbiosis International (Deemed University)



Graded in Autonomous Category



by UGC

Ranked



amongst the Top 50 Universities in India by NIRF, 2025

Re-accredited by NAAC with



Grade

in India Ranked



in the QS World University Asia Rankings 2026.

Admission Enquiries

Program Name	Email ID	Phone No.	Mobile No.
B. Tech	btechadmissions@sitpune.edu.in	+91-20-61936300/ +91-20-61936419/ +91-20-61936464/	+91 9112299250/ 9112299251
Direct Second Year (Lateral Entry)	lateraladmissions@sitpune.edu.in		+91 7262022404
M. Tech	mtechadmissions@sitpune.edu.in		+91 7262055404



Symbiosis Institute of Technology, Pune
Symbiosis International (Deemed University)
Lavale, Pune, Maharashtra 412115
www.sitpune.edu.in



SYMBIOSIS INTERNATIONAL (DEEMED UNIVERSITY)

(Established under Section 3 of the UGC Act, 1956) | Re-accredited by NAAC with 'A++' grade | Awarded Category - I by UGC